

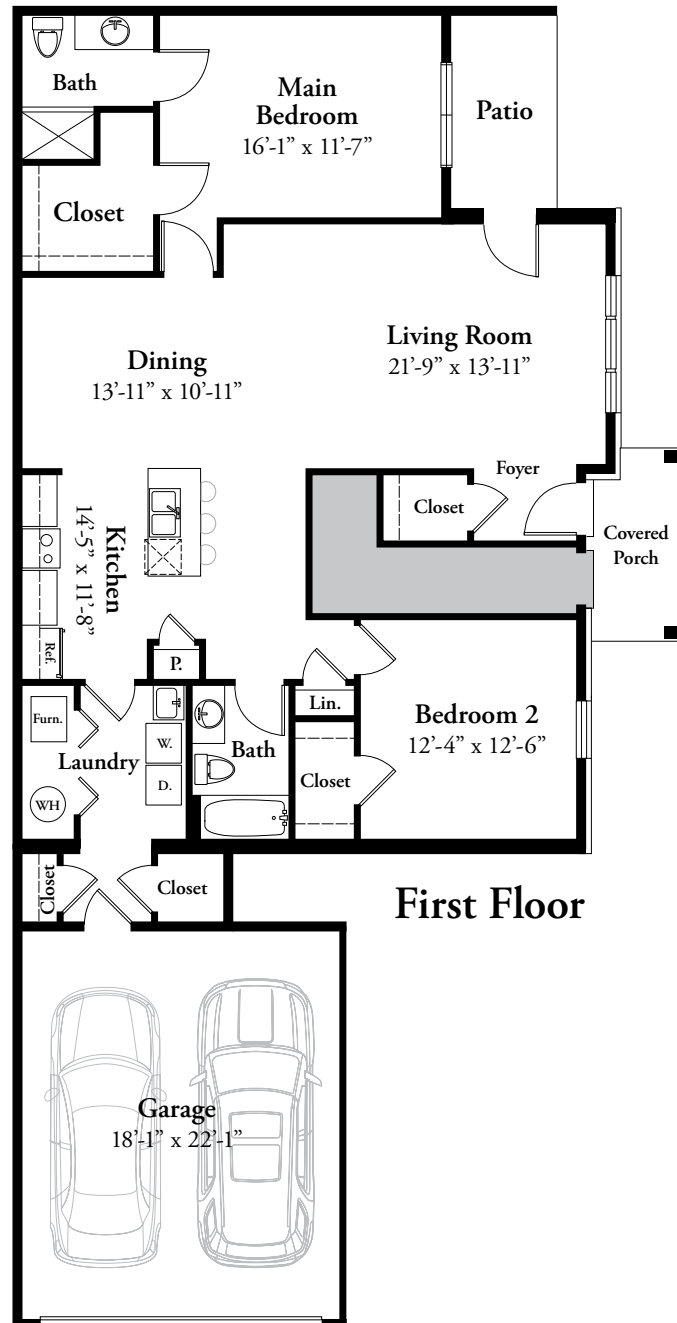
# ASHBURY

Two Bedroom, Two Bath | 1,471 Sq. Ft.



**BARRINGTON**  
APARTMENT HOMES

- 2 bedroom, 2 bath with walk-in closets
- 9 foot ceilings
- Single story living
- 2 car attached garage for every unit
- Snack bar seating at kitchen island
- Pet friendly community with dog wash
- Premium stainless steel appliances
- Full size washer and dryer included in every apartment
- Granite finishes throughout
- Generously sized pantry



2365 Barrington Drive, Commerce Township, MI 48390  
Located on the northwest corner of Pontiac Trail and M5.

P: 248-560-7733

Leasing@RentBarrington.com | **RentBarrington.com**

\*In Select Units We reserve the right to modify features, price, specifications and/or to change or discontinue models without notice or obligation.  
Floor plan dimensions are approximate. All information provided herein is subject to change at ownership's sole discretion. 020822

